

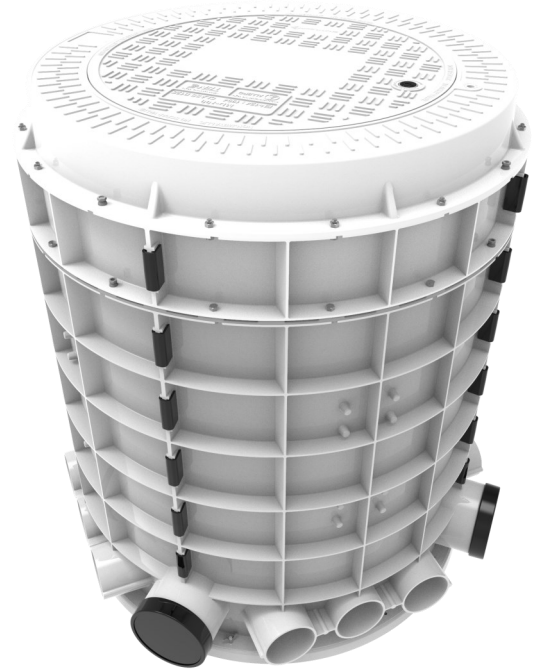
**OVERVIEW**

This chamber is a pre-kitted solution for fibre distribution and is deployed in applications where fibre distribution frames need to be installed underground to conceal their presence, improve their security or when surface space is limited, restricted or at a premium in terms of time to market or cost of deployment.

Fibre distribution frames require a completely dry chamber environment to function optimally. In addition, full access management and monitoring of the internal environment of the chamber are required to ensure the network integrity is maintained. The monitoring system raises alarms when pre-set thresholds in temperature, vibration, humidity or light are exceeded.

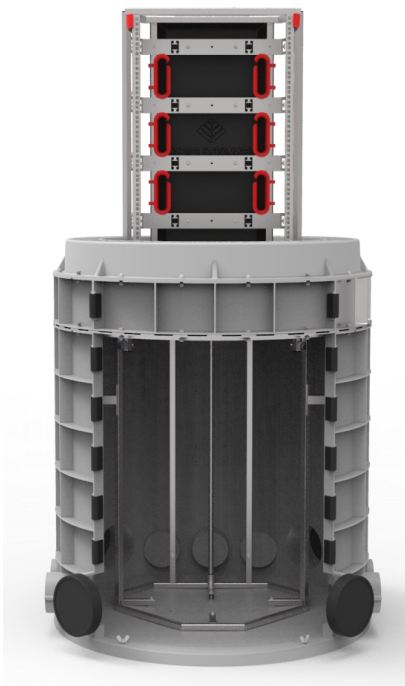
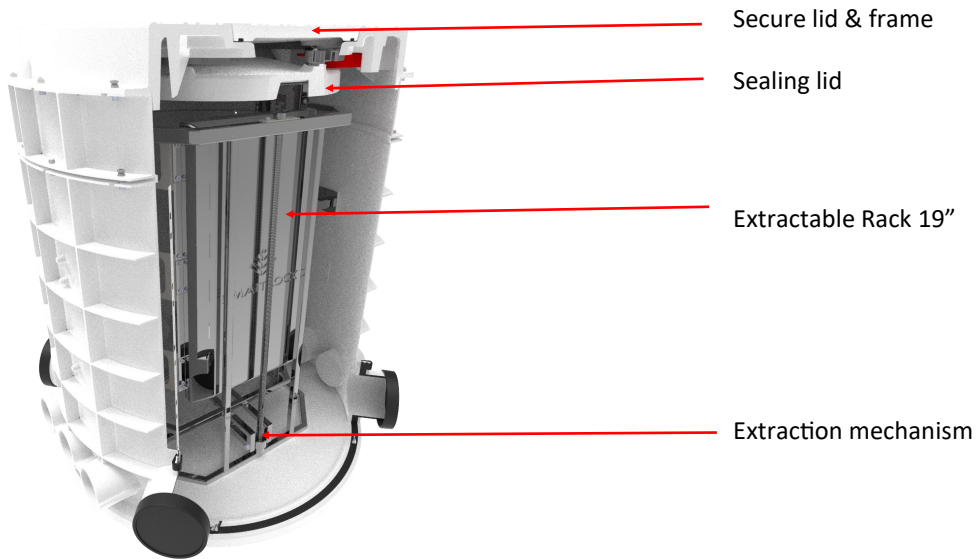
This Sealed Chamber is fitted with an extractable, standard 19" 17U rack, complete with patch cord management, as well as cable transportation tubes and a mechanical rack extraction system. The Chamber contains a dual re-enterable lid system, for security and internal environment isolation. All duct entry ports are sealed by means of compression seals and gas tight duct end-caps.

The Sealed Equipment Chamber complies with the recognised European standards wrt load bearing and impact strength. The manhole chamber is cylindrical in shape, and its multiple entry ports provide for various diameters of duct entry. All the components of the manhole are manufactured and tested in a quality assured factory environment, certified to ISO 9001.

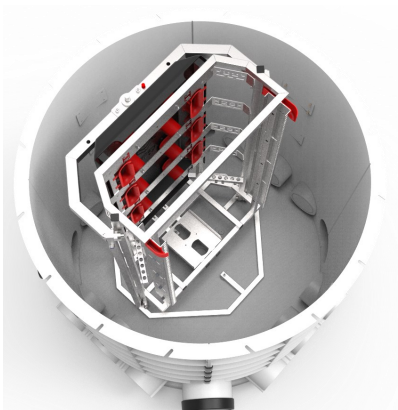


<b>MATERIALS</b>	
Lid, frame, side panels and base plate	UV stabilised glass reinforced polyester in sheet moulded format; (SMC) (Propriety engineered formulation optimised for application)
Latch and alignment plate	Thermoplastic
Assembly clips , sealing latches	ABS plastic
All metal components and fasteners	Stainless steel 304
<b>STANDARDS</b>	
Load bearing and impact strength	SANS 558 Heavy Duty and EN124 Class B125 / C250
Ingress protection	IP68
Factory tests	Pressurised air tested
<b>ACCESS CONTROL AND MONITORING</b>	
Access management	Mechatronic lock, operated by Smartkey
Monitoring	IoT sensor, Sigfox/LoRa compatible, measuring vibration, light, temperature and humidity. Alarms are raised when pre-set levels are exceeded. Alarms are correlated by access management system to eliminate nuisance alarms.
<b>LIDS</b>	
Secure lid	Raised non-slip pattern (65% of surface area), branded
Internal sealing lid	Dome shaped, with 6x sealing handles and silicone rubber compression seal
<b>DUCT &amp; SLEEVE ENTRY PORTS</b>	
110mm inner diameter	12 off, normally sealed with knock-out section / compression glands
160mm inner diameter	4 off, sealed by means of End-cap.
<b>FIBRE CABLE MANAGEMENT</b>	Transportation tubes to protect fibres during rack movement (customised)
<b>RACK (19")</b>	
Capacity	17U
Extraction mechanism	treaded drive shaft, operated with cordless drill
<b>MASS</b>	160kg, fully assembled
<b>CARRY CAPACITY OF RACK</b>	80kg
<b>PRIMARY DIMENSIONS</b>	Daylight opening: 600mm, depth of sealed section of chamber: 1,000mm, external height: 1,250mm
<b>WARRANTY</b>	15 years manufacturer's warranty
<b>OPTIONAL EXTRAS AND ACCESSORIES</b>	<ul style="list-style-type: none"> <li>• Custom tarpaulin and dust ring to prevent dust entry during use</li> <li>• Fibre protection shield, front cover and base plate</li> <li>• Pre-configured monitoring variables</li> <li>• Compression glands for specific duct entry ports</li> <li>• Lifting lugs</li> </ul>

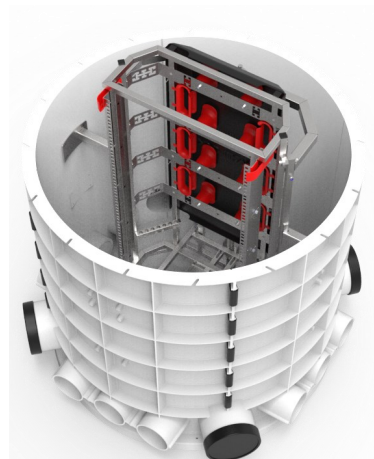
Components



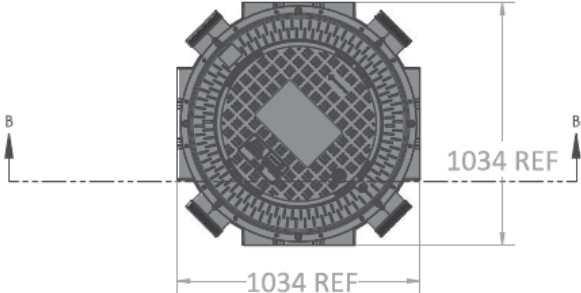
Rack extraction



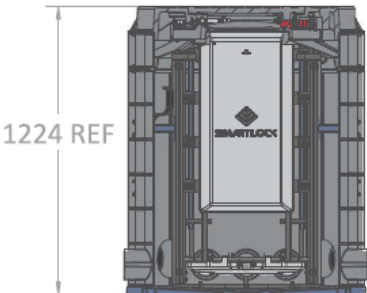
Rack view; top removed



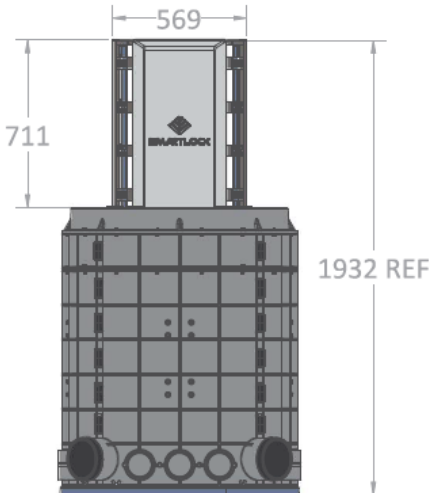
TOP VIEW: LID REMOVED FOR VISIBILITY



SECTION B-B: EQUIPMENT RACK RETRACTED



FRONT VIEW: EQUIPMENT RACK EXTRACTED



ISOMETRIC VIEW:

