

## M8 IP68 Microloop

**The M8 IP68, ACCOMODATES CONVENTIONAL ADSS CABLES AND FACILITATES UP TO 8 CUSTOMER DROPS FROM A SINGLE NODE.**

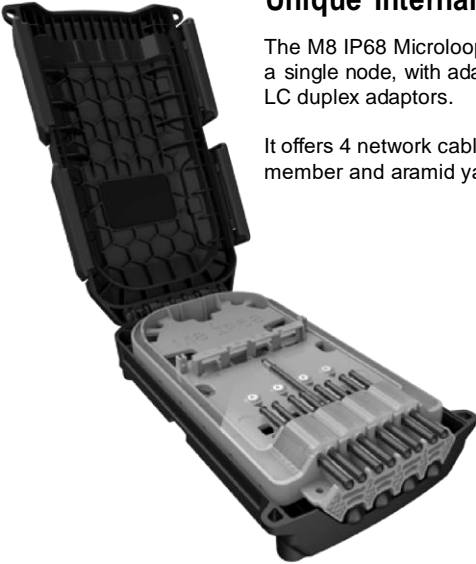


M8 IP68 Microloop is ideal for a broad scope of network deployment. Just one single enclosure with 8 drop cable exit ports, best used in aerial network applications and suitable for outdoor installations in areas prone to excessive rain or flooding.

## Unique Internal Features

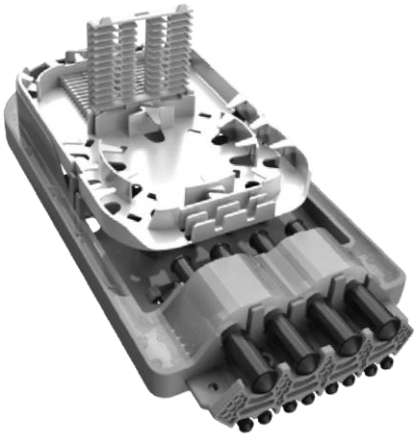
The M8 IP68 Microloop has 8 drop cable exit ports from a single node, with adaptor plate to fit 4 SC simplex or 4 LC duplex adaptors.

It offers 4 network cable entry ports with strength member and aramid yarn fixation.



The M8 contains a loop storage area for loose tube cables. Up to 48F splice tray with Up to 2 x PLC splitter bays. The PLC splitter bays house x 2 small-form, bare fiber modules with 900µm tails

Network cable diameters are from 6mm to 12mm for conventional ADSS cables.



## Unique External Features

Removable mounting brackets enables the enclosure to be directly mounted to transmission poles, for aerial networks.

Mounting points are discreetly hidden behind covers. This provides enhanced security.

External padlock features fit conventional padlocks or SMART padlocks for maximum security.

M8's advanced toggle clamps are engineered for unparalleled tamper resistance.

## Recommended Accessories:

