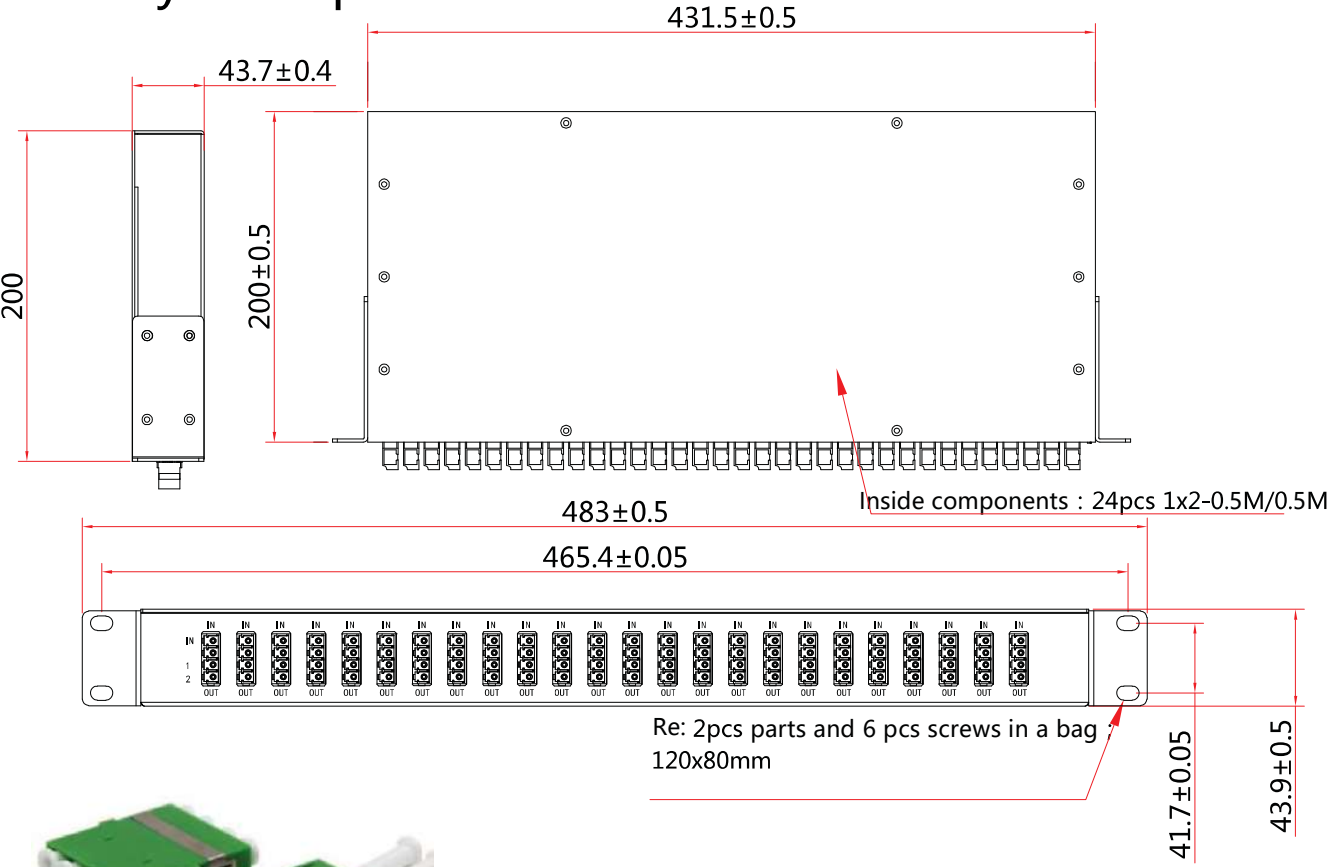
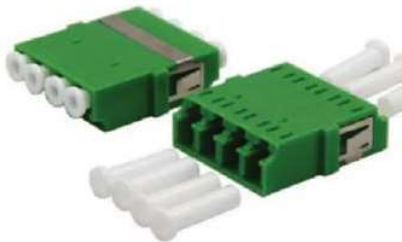


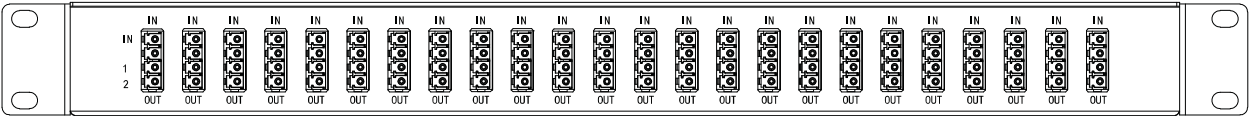
48 Way PLC Splitter



Optical Specifications	Unit: dB
Operating Wavelength	1260-1650nm
Insertion Loss (IL)	$\leq 4.1\text{dB}$
Uniformity UF)	$\leq 1.0\text{dB}$
Polarization dependent loss(dB)	$\leq 0.3\text{ dB}$
Return loss RL)	$\geq 55\text{dB}$
Directivity	$\geq 55\text{dB}$
Operation Temperature	-40~85 °C
Storage Temperature	-40~85 °C



Panel's diagram



Data sheet sample

1x2 PLC Splitter Data Sheet							
SN		2022080900001		Test Date		2022/08/09	
Item		IL (dB)		PDL (dB)		RL (dB)	
		@1310nm	@1550nm	@1310nm	@1550nm	@1310nm	@1550nm
IN1	CH01	3.74	3.87	0.10	0.08	≥50	≥50
	CH02	3.50	3.69	0.10	0.09		
Uniformity		3.47	3.41	/	/	/	/
IN2	CH01	3.52	3.51	0.06	0.06	≥50	≥50
	CH02	3.80	3.58	0.08	0.06		
Uniformity		3.50	3.85	/	/	/	/
IN3	CH01	3.62	3.75	0.07	0.09	≥50	≥50
	CH02	3.97	3.84	0.07	0.08		
Uniformity		3.44	3.44	/	/	/	/
•	CH01	3.90	3.81	0.10	0.05	≥50	≥50
	CH02	3.94	3.74	0.06	0.08		
Uniformity		3.65	3.88	/	/	/	/
•	CH01	3.50	3.78	0.06	0.10	≥50	≥50
	CH02	3.69	3.48	0.05	0.07		
Uniformity		3.66	3.51	/	/	/	/
•	CH01	3.50	3.73	0.09	0.10	≥50	≥50
	CH02	3.65	3.86	0.05	0.09		
Uniformity		3.58	3.65	/	/	/	/
IN23	CH01	3.59	3.76	0.09	0.09	≥50	≥50
	CH02	3.77	3.77	0.06	0.10		
Uniformity		3.52	3.43	/	/	/	/
IN24	CH01	3.93	3.89	0.10	0.07	≥50	≥50
	CH02	3.46	3.66	0.06	0.07		
Uniformity			0.23	/	/	/	/
Operating Wavelength		1260 ~1650(nm)					
Dimension(LxWxH)		431.5X200X44(mm)					
Fiber Type		G657A2					
Operating Temperature		-40~85(℃)					
Storage Temperature		-40~85(℃)					
Tested By: _____				Checked By: _____			

TITLE	24-H102R-028 PLC SPLITTER			
	24-H102R-028		